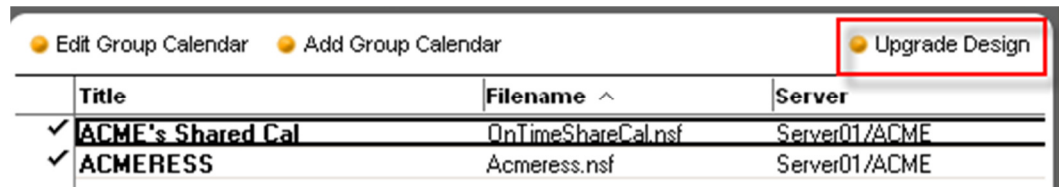


## Release notes Group Calendar 9.7.0 & 9.7.1

### Improvements:

- ❖ During the new upgrade design feature in release 9.6.4 we didn't upgrade the design of Archive database. If a corresponding archive database is found, it will now be upgraded as well.

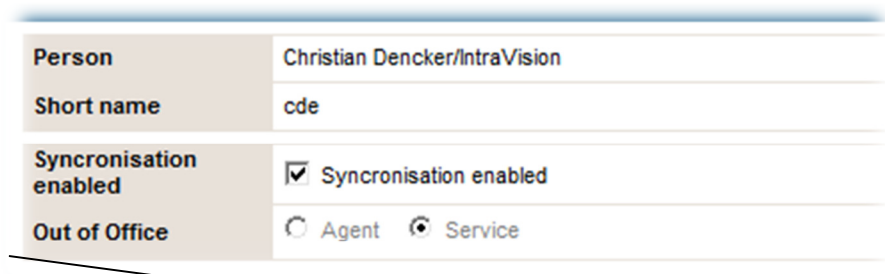


Title	Filename ^	Server
✓ ACME's Shared Cal	OnTimeShareCal.nsf	Server01/ACME
✓ ACMERESS	Acmeress.nsf	Server01/ACME

- ❖ When using the Auto Configuration there was a limit of 6 calendars. We have raised that from 6 to 20 calendars.

- ❖ In Domino / Notes 8 the new Out of Office as a service is now supported in OnTime GC. In the person document we have added a new field to show whether the user is set to use service or agent based OOO.

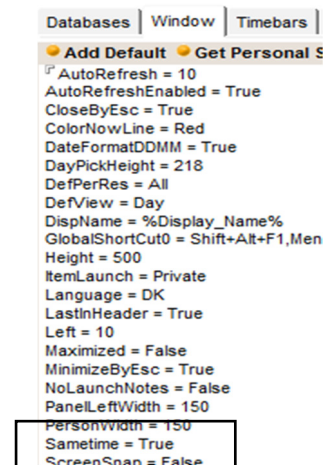
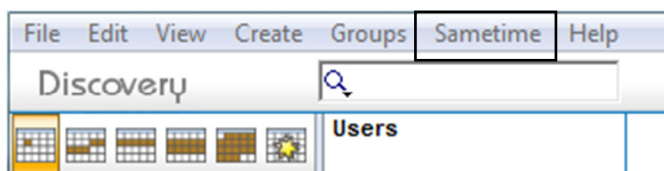
This field is set the first time the user enabled OOO and the synch has run, based on what the administrator has set on the server's configuration document.



Person	Christian Dencker/IntraVision
Short name	cde
Synchronisation enabled	<input checked="" type="checkbox"/> Synchronisation enabled
Out of Office	<input type="radio"/> Agent <input checked="" type="radio"/> Service

Please note that service based OOO on Domino only supports release 8 servers, clients and mail databases.

- ❖ New Discovery setting "Window" - "Sametime" and default is "True". If set to True the Discovery Client is sametime enabled. If set to False the Discovery Client will not be sametime enabled.





- ❖ We have added a new fields on all OTPush documents, for better error search (by knowing the source) \$OnTimeSourceServer and \$OnTimeSourceFilepath
- ❖ Language is no longer updated during synchronization but only during Load and design updates. This is changed due to very slow access to embedded file resources in the database.
- ❖ Due to potential risk of infinity loop/hang in accessing views in Domino according to IBM/Lotus all view reference has now 'Auto Refresh' set to false, and are refreshed when necessary
- ❖ We have implemented the new mobile calendar in Calconn. From the Calendar configuration document you can now specify the template type.

A screenshot of a web form titled 'Calendar Config'. The form has a blue header bar with the title. Below the header, there are four input fields arranged in a 2x2 grid. The top-left field is 'Name' with the value '|IntraVision |'. The top-right field is 'Servers' with a dropdown menu showing '| CPH001/IntraVision |'. The bottom-left field is 'Filename' with the value '| sharecal.nsf |'. The bottom-right field is 'Template type' with two radio buttons: 'Calendar' (selected) and 'Mobile'.

- ❖ A new method of handling the process to eliminating the doublets of users in Calconn.

#### Bug:

- ❖ In one situation a blank Language profile was created and resulted in a blank language entry in User settings  
This is now fixed
- ❖ When users where setting alarm on broadcast entries they was not "enabled" when copied to private mail databases  
This is now fixed
- ❖ Running "Load OTAdmin" from the server option document gave an runtime error  
This is now fixed